

DOXFIT-LB CAPSULES

Doxycycline 100 mg +Lactic Acid Bacillus
(5 Billion Spores)

"Dual Action: Broad-Spectrum Antibacterial with Gut Protection"

Marketed by: Human Orthocare

A Subsidiary of Human Biolife India Pvt. Ltd.

www.humanorthocare.com



Product Overview

Composition (per capsule)

- Doxycycline – 100 mg
- Lactic Acid Bacillus – 5 Billion Spores

Broad-Spectrum Antibiotic

Effective tetracycline antibiotic targeting Gram +ve, Gram –ve & atypical organisms

Probiotic Protection

Lactic Acid Bacillus restores gut microflora and reduces antibiotic-associated complications

Dual Benefit

Reduces risk of antibiotic-associated diarrhoea & dysbiosis whilst maintaining therapeutic efficacy



Mechanism of Action



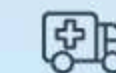
Doxycycline Action

- Inhibits bacterial protein synthesis (30S ribosomal subunit)
- Bacteriostatic → prevents bacterial growth & spread
- Effective against respiratory, urinary, skin, soft tissue & STI pathogens



Lactic Acid Bacillus

- Restores beneficial gut bacteria
- Reduces GI upset, bloating & diarrhoea
- Improves antibiotic tolerance & compliance



Combined Result

Effective infection control + Gut microbiota balance

Optimal therapeutic outcomes with minimised side effects

Clinical Indications

DOXFIT-LB Capsules are recommended for comprehensive infection management across multiple systems:



Respiratory Infections

Bronchitis, pneumonia, sinusitis and other upper and lower respiratory tract infections



Skin & Soft Tissue

Acne, cellulitis, abscess and various dermatological bacterial infections



Urinary Tract Infections

Comprehensive coverage for both complicated and uncomplicated UTIs



- **Sexually Transmitted Infections**

Chlamydia, syphilis, gonorrhoea adjunct therapy

- **Specialised Infections**

Rickettsial, zoonotic & atypical infections

- **Extended Therapy**

Post-surgical & long-duration antibiotic therapy

Clinical Advantages



Broad-Spectrum Coverage

Comprehensive antibacterial action with proven doxycycline efficacy against diverse pathogens



GI Protection

Probiotic component minimises antibiotic-associated gastrointestinal side effects



Prevents Complications

Reduces risk of diarrhoea, dysbiosis & candidiasis commonly associated with antibiotic therapy



Enhanced Compliance

Better patient adherence in long-term therapy due to improved tolerability profile



Dual Protection

Infection control + gut health in a single formulation

Comparison with Plain Doxycycline

DOXFIT-LB demonstrates superior clinical profile compared to standard doxycycline monotherapy:

Parameter	DOXFIT-LB (Doxycycline + LAB)	Doxycycline Alone
Antibacterial Action	✓ Strong	✓ Strong
Gut Protection	✓ Yes (probiotic support)	✗ No
Risk of Diarrhoea/Dysbiosis	✓ Reduced	⚠ Higher
Patient Compliance	✓ Better	⚠ Moderate

✓ **Clinical Advantage:** DOXFIT-LB provides the same therapeutic efficacy as standard doxycycline whilst significantly reducing treatment-related complications and improving patient experience.

Dosage & Administration

1

Standard Dosage

Adults: 100 mg once or twice daily, depending on infection type & severity

Dosing frequency determined by clinical presentation and pathogen sensitivity

2

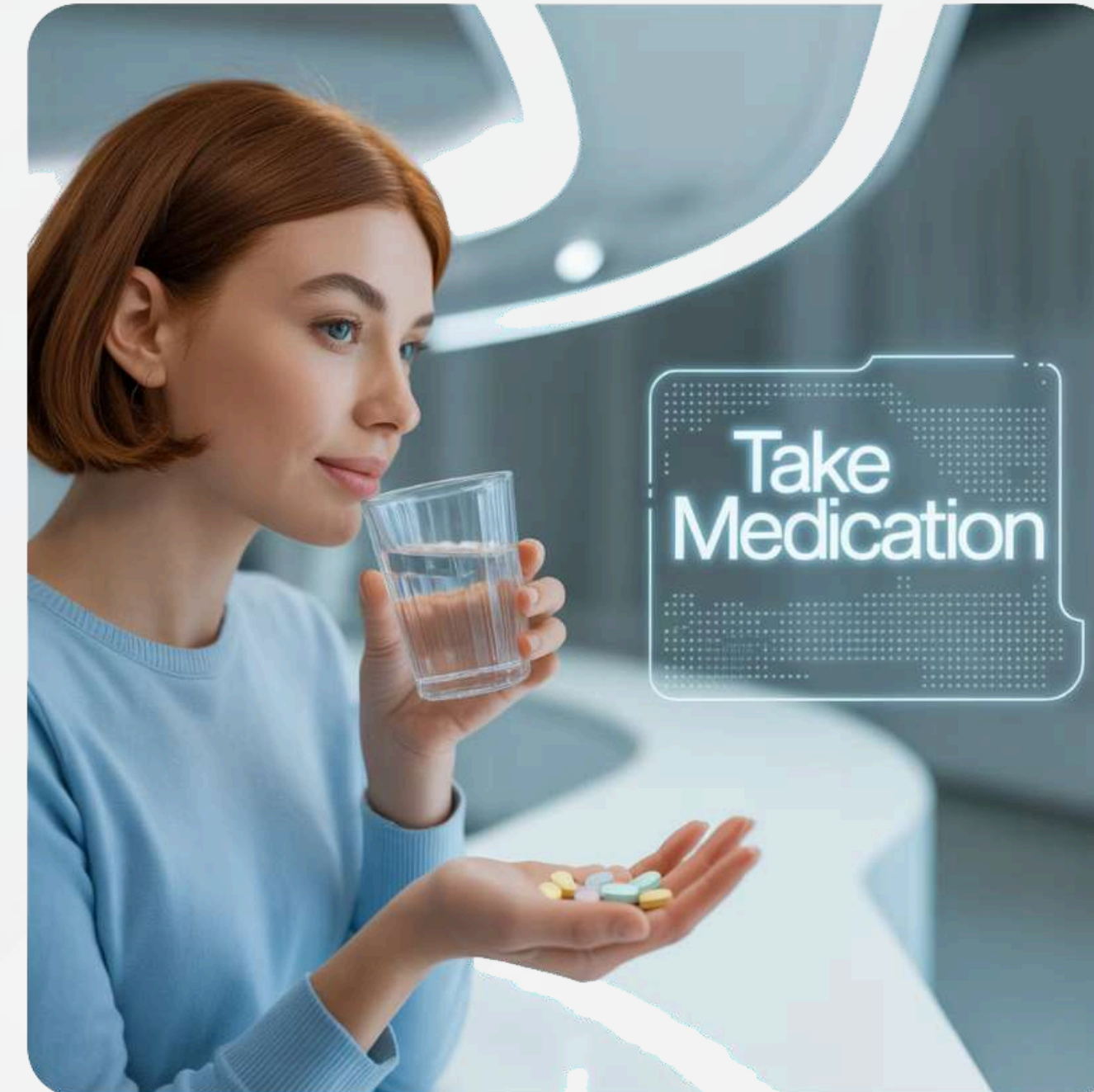
Administration Guidelines

To be taken with a full glass of water, preferably after meals to minimise gastric irritation

3

Important Considerations

- ⚠️ Avoid taking with milk/antacids (interferes with absorption)
- ⚠️ Complete full prescribed course for optimal therapeutic results



⚠️ Administration Tips:

- Take with adequate water to prevent oesophageal irritation
- Maintain consistent timing for optimal blood levels
- Avoid dairy products within 2 hours of dosing

Safety & Tolerability

DOXFIT-LB demonstrates an excellent safety profile with enhanced tolerability due to probiotic inclusion:

Generally Well-Tolerated

Clinical studies demonstrate good patient acceptance with minimal discontinuation rates

Reduced Side Effects

Probiotic component significantly minimises common GI complications

Possible Side Effects

- Mild GI upset, nausea, diarrhoea (reduced by probiotic)
- Photosensitivity (avoid excessive sunlight)
- Rare: oesophagitis (if not taken with adequate water)

Contraindications

- ⊗ • Pregnancy & children <8 years (risk of tooth discolouration)
- Severe liver impairment
- Known hypersensitivity to tetracyclines

Prescriber Note: Always assess patient history and concurrent medications before prescribing.





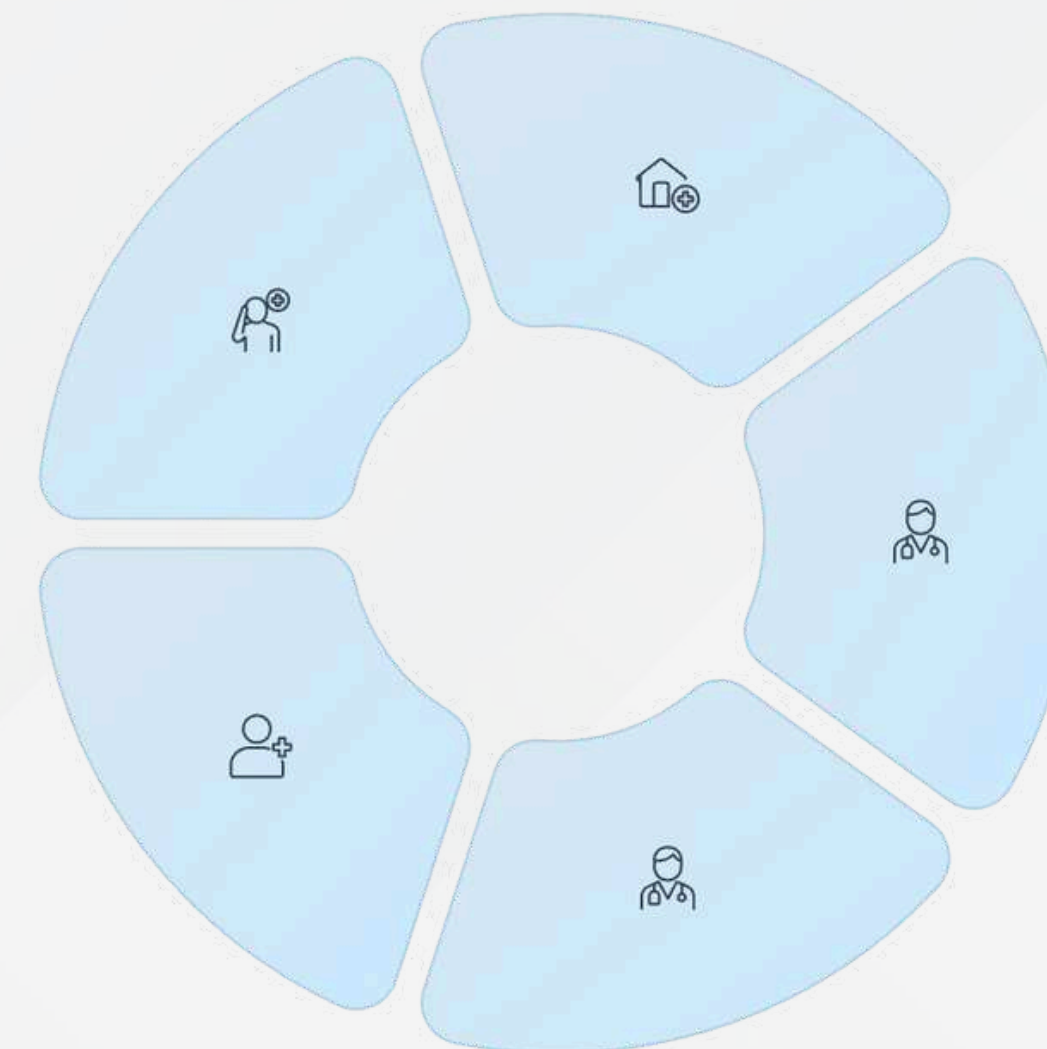
Why Prescribe DOXFIT-LB?

Reliable Coverage

Strong & dependable antibiotic efficacy against broad spectrum of pathogens

Trusted Formulation

Backed by **Human Orthocare's** commitment to pharmaceutical excellence



Patient Comfort

Probiotic protection ensures enhanced patient comfort throughout treatment

Better Compliance

Lower GI side effects lead to improved patient adherence and treatment success

Extended Therapy

Particularly suitable for prolonged antibiotic courses with maintained tolerability

"The doctor's choice for comprehensive infection management with enhanced patient care"



Contact Us

Step into care that moves you forward.

Use with clinical discretion, especially in high-risk orthopedic conditions.

HumAn Orthocare – A Subsidiary of Human Biolife India Pvt. Ltd.

For medical queries or collaboration:

 www.humanorthocare.com